

**General guidelines on assembling
drum and spider on
TD30, TD50 and TD75**

CAUTION !

Some components may have sharp edges!

Wear gloves when handling mechanical components.

NOTICE TO SERVICE PERSONNEL

INSTALLATION

Improper installation of Wascomat laundry and wet cleaning equipment can result in personal injury and severe damage to the machine.

REFER INSTALLATION TO QUALIFIED PERSONNEL!

RISK OF ELECTRIC SHOCK

The equipment utilizes high Voltages. Disconnect electric power before servicing.

The use of proper service tools and techniques, and the use of proper repair procedures, is essential to the safety of service personnel and equipment users.

REFER SERVICING TO QUALIFIED SERVICE PERSONNEL!

RISK OF PERSONAL INJURY

This equipment contains moving parts, and some components that may have sharp edges. Improper or careless service procedures may result in serious injury to service personnel.

REFER SERVICING TO QUALIFIED SERVICE PERSONNEL!

ABOUT THIS MANUAL

This manual is intended to provide service guidance to qualified service personnel.

Wascomat and its authorized dealers make no determination regarding the qualification of individuals requesting this service manual. The service provider assumes all risks inherent to the servicing of this equipment and any risks that arise as result of the lack of knowledge or ability of any person servicing this equipment.

REFER SERVICING TO QUALIFIED SERVICE PERSONNEL!

NOTE:

Improper installation or servicing of Wascomat equipment will void the manufacturer's warranty!

Before disassembling old drum and spider

Fig. 1. The drum must run true within 1/16 inch when assembled into the dryer. Shims are used between the spider and the rear drum surface to achieve this.

Before removing the spider from the old assembly, note the number and location of the shims. Use a permanent marker to write this information directly on the drum or spider, depending on which is being re-used.

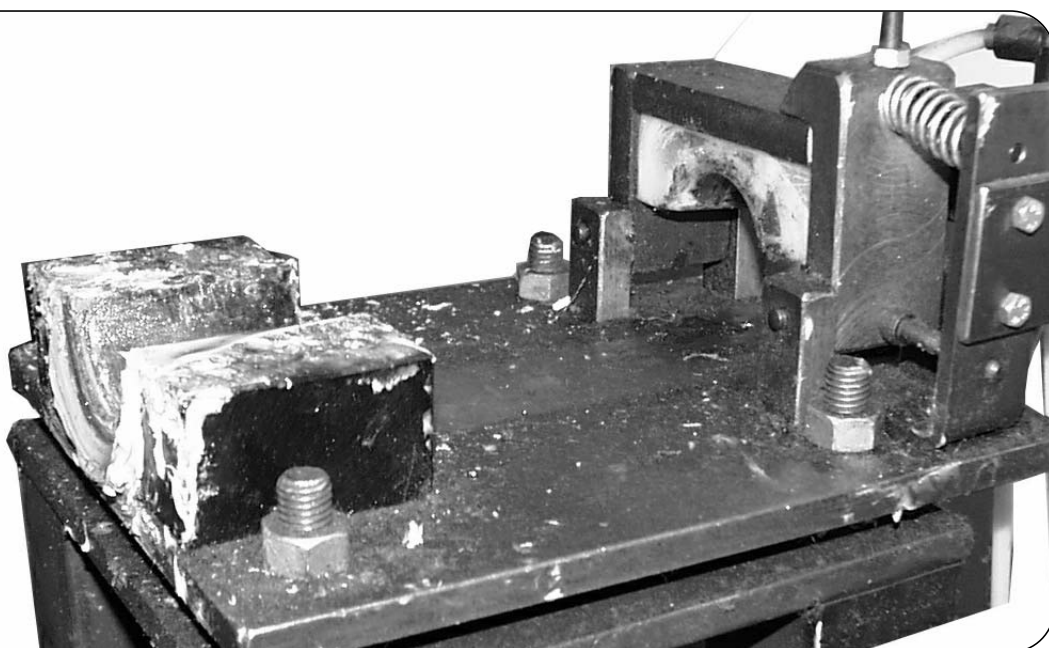


The necessary fixture

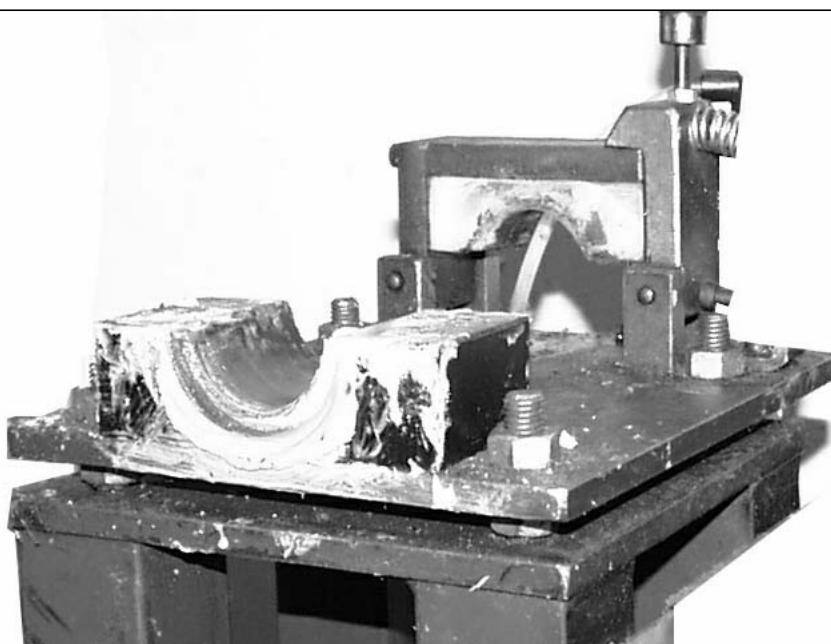
Fig. 2 and 3. You will need a fixture in which it is possible to rotate spider and drum.

It does not have to be an advanced fixture as long as it can rotate the assembly without damaging the surface of the shaft.

2



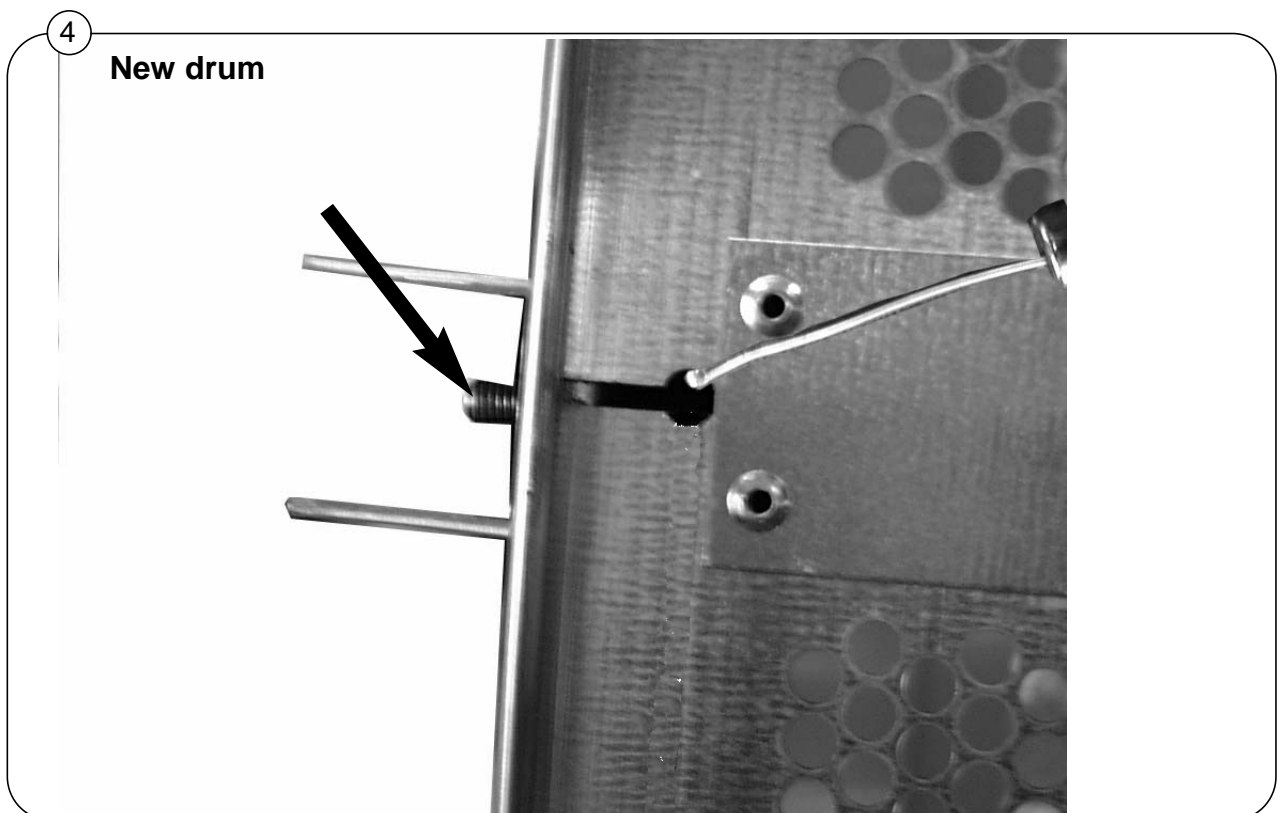
3



Assembling new drum and spider

1. **Fig. 4** From the front of the drum, insert one threaded rod through each drum lifter so that it passes completely through and protrudes from the rear.

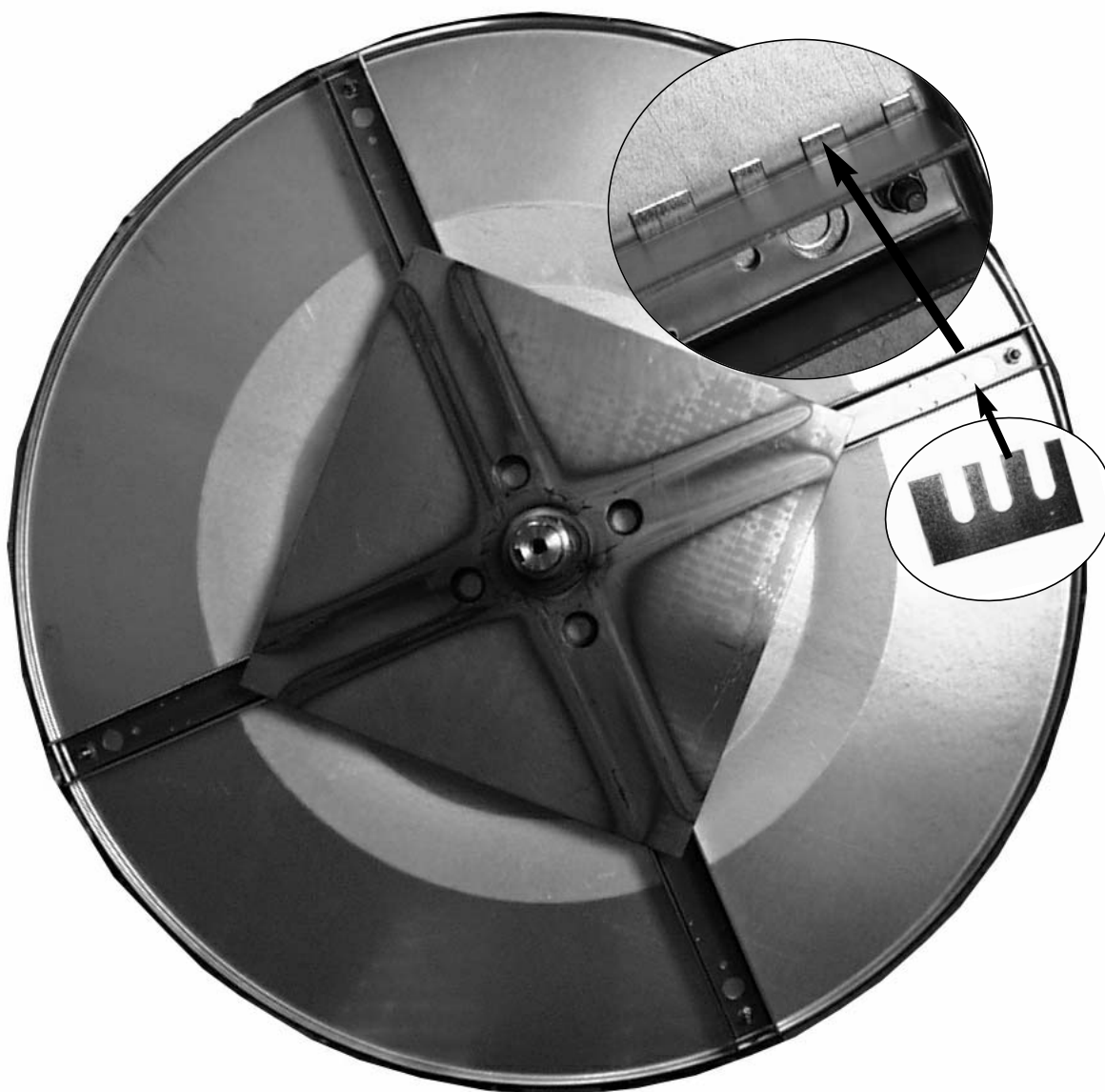
Use a short piece of wire with a hook bent on its end to reach into the hole in the side of the drum and guide the threaded rod through the rear hole.



Assembling new drum and spider

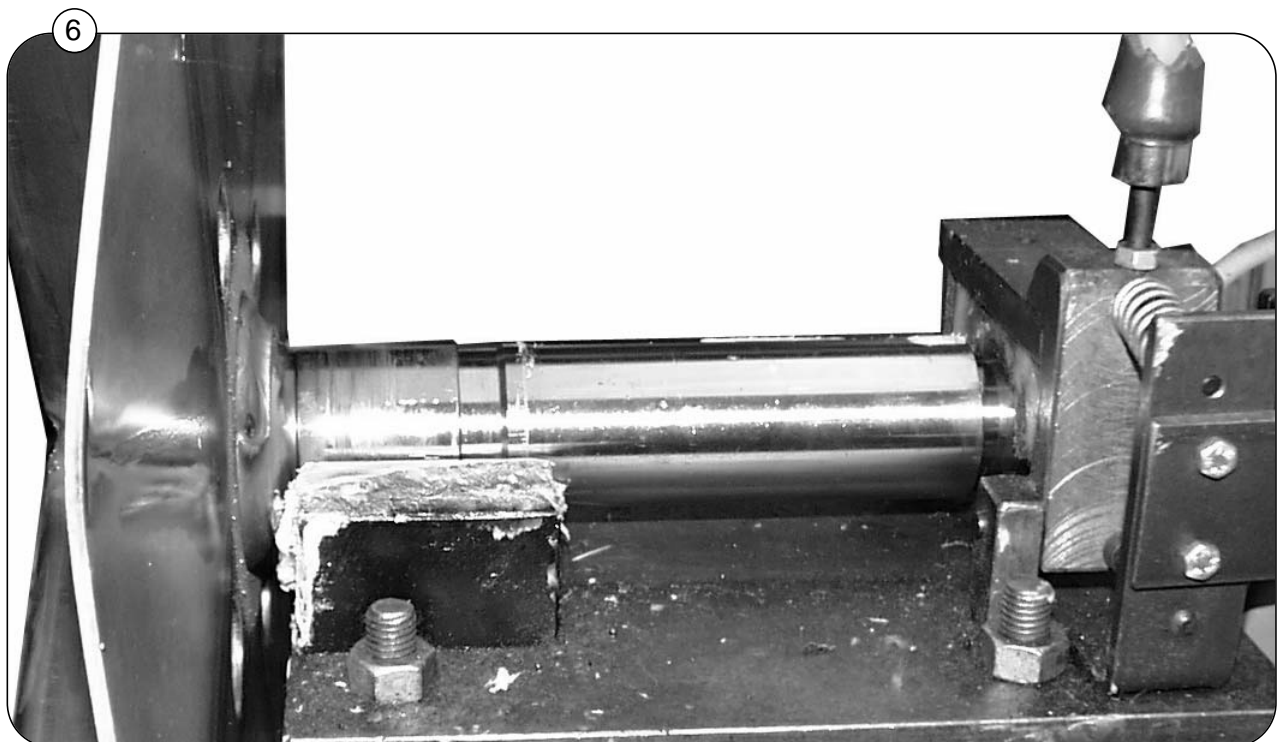
2. **Fig. 5.** Assemble new drum and spider and if necessary use the same amount of shims as used before.

5

New drum

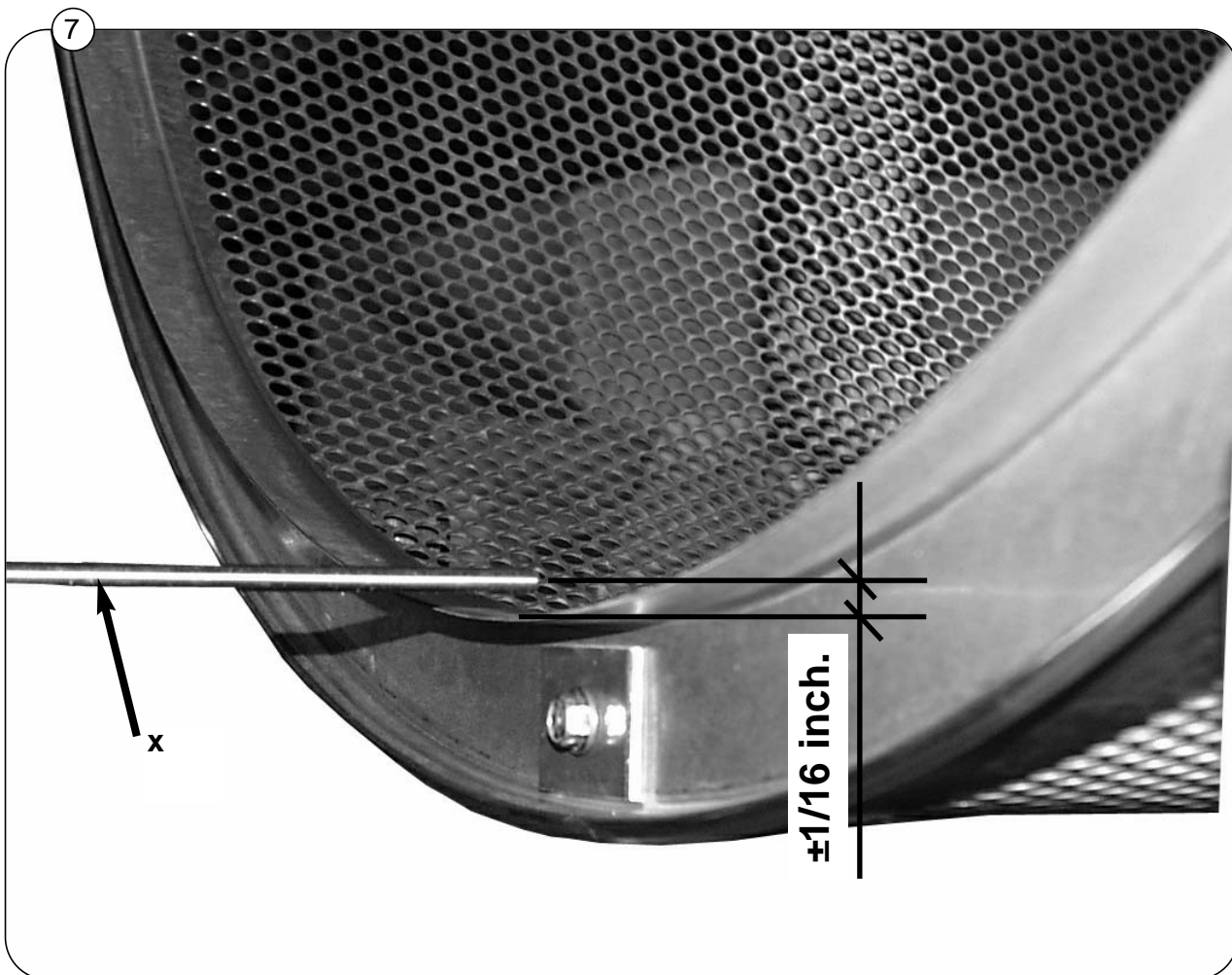
Drum with spider in fixture

Fig. 6. Place the assembly in the fixture.



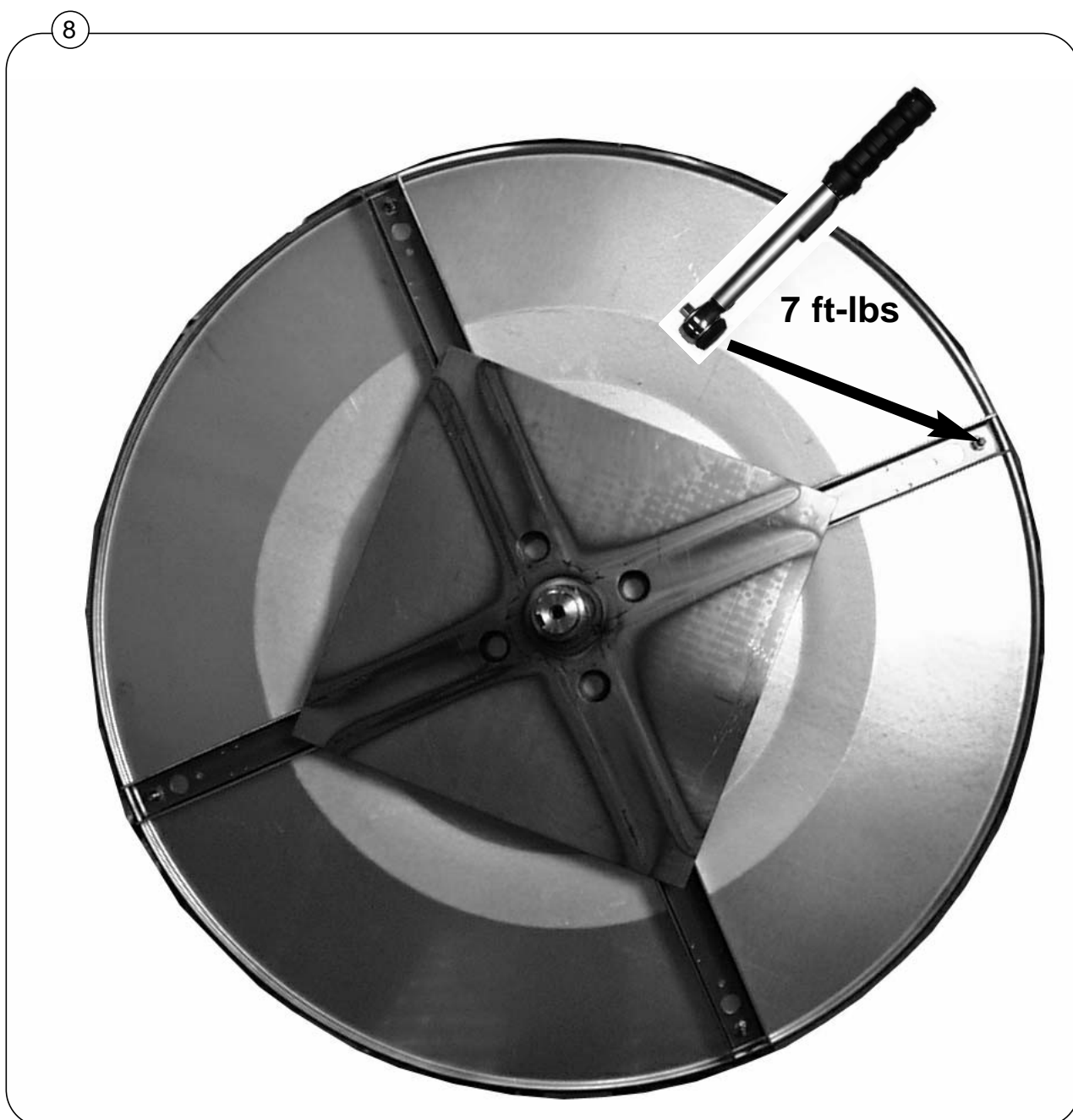
Adjusting the drum

1. **Fig. 7.** Set up a fixed measuring point **x** approximately 1/8 inch from the flange of the drum.
2. Rotate the drum and observe the distance variation.
3. Adjust the number and placement of shims until the variation is only $\pm 1/16$ inch.



Tightening

Fig. 8. Tighten the 4 bolts with 7 ft-lbs torque.



Further information regarding machine safety, service and parts can be obtained from your dealer.

All requests for assistance must include the model and serial number as they appear on the machine identification plate.